

# 4200 Parliament Place

FOR LEASE

LANHAM, MARYLAND 20706  
PRINCE GEORGE'S COUNTY



UNDER CONSTRUCTION

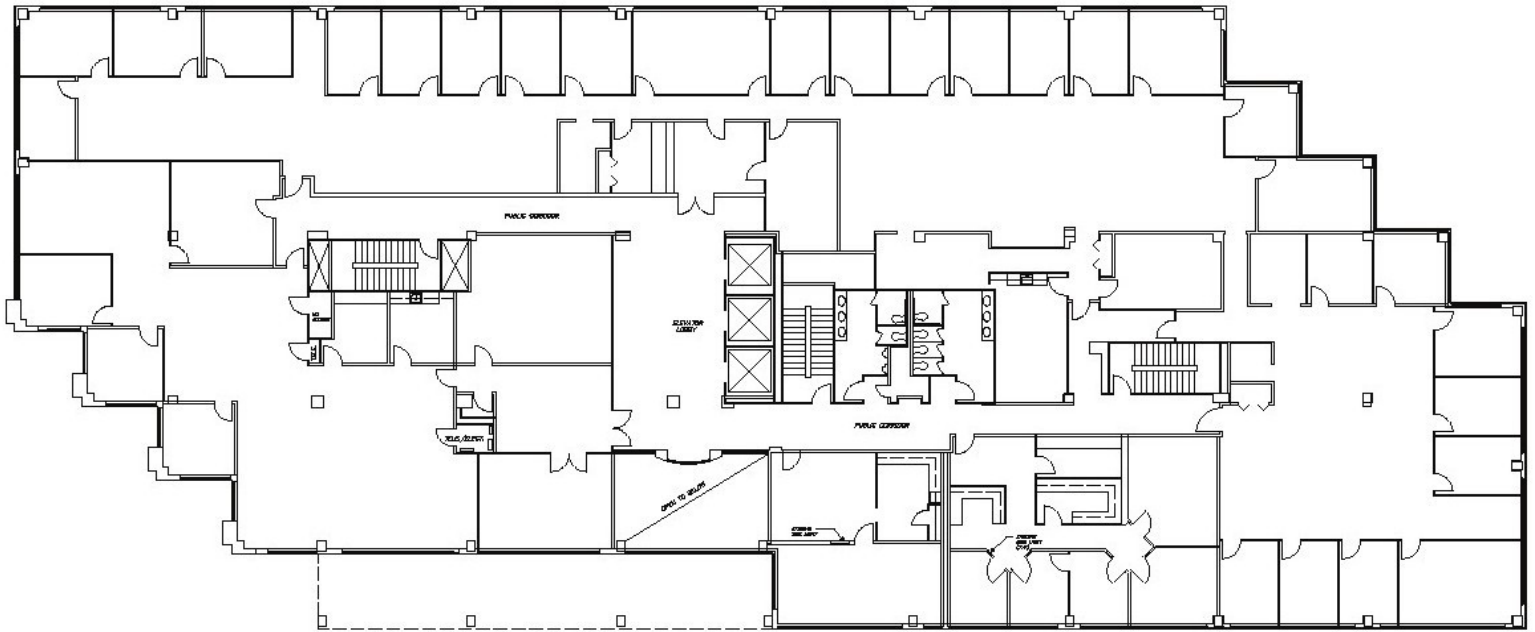
## Building Features

4200 Parliament Place is a 122,000 SF Six-Story, Class A office building, strategically located near the intersection of the Capital Beltway (I-495) and Route 50.

- This premier property features an impressive design with 12 corner offices per floor, excellent visibility, and numerous nearby amenities.
- Abundant surface parking with reserved covered parking available
- T1 lines by Sprint and AT&T, as well as FiOS
- On-site vending area
- First floor men and women's locker rooms with shower



# Typical Floor Plan



## Location Proximity

- 1 Block** Baltimore County Circuit Court
- 3 Blocks** Towson Circle Shops &
- 0.4 Miles** Restaurants Towson University
- 0.5 Miles** Towson Mall
- 1.3 Miles** I-695



To see more properties like this one,  
please visit our website: [www.cregllc.com](http://www.cregllc.com)

1343 ASHTON ROAD, SUITE B, HANOVER, MD 21076  
main (410) 787-8799 • fax (410) 787-8872

**CHRIS MURRAY**  
443.883.8173  
cmurray@cregllc.com

**MATT LARAWAY, SIOR**  
443.883.8180  
mlaraway@cregllc.com