

# TOWN CENTER AT ARUNDEL PRESERVE

7793 ARUNDEL MILLS BLVD  
HANOVER, MD

# BOUTIQUE SPA/SALON

LEED SILVER DESIGNED  
MIXED-USE TOWN CENTER



Live

Work

Shop

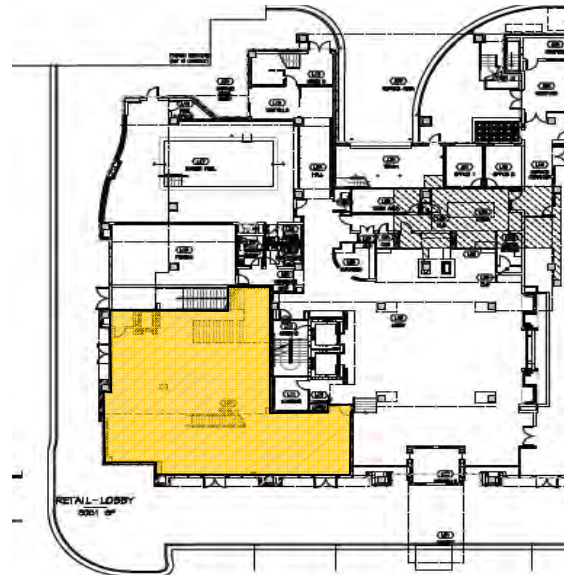
Play



The Town Center at ARUNDEL PRESERVE is a Smart-Growth project of urban character that will comprise approximately 1.3 million square feet of LEED Gold-designed, mixed-use development. The Town Center is one component of ARUNDEL PRESERVE, a 268 acre mixed-use community located at the center of the Baltimore-Washington Corridor with immediate access to I-295/BW Parkway and is a part of the larger 1,100 acre Arundel Mills development.

## Spa/Salon Space in Upscale Boutique Hotel:

- ◇ 4,800 SF with Street & Hotel Lobby Access
- ◇ Pool and Gym Available for Spa Guests
- ◇ Substantial Improvement Allowance from Developer
- ◇ 87,810 CPD at BW Parkway/Arundel Mills
- ◇ Over 40,000 Households with \$75,000 average income within 5 miles



FOR LEASING INFORMATION,  
CONTACT:

JIM LIGHTHIZER  
443-883-8171

JLIGHTHIZER@CREGLLC.COM

EDWARD BRADY  
443-883-8170

EBRADY@CREGLLC.COM

ROB HOOPER  
443-883-8179

RHOOPER@CREGLLC.COM



CHESAPEAKE  
Real Estate Group, LLC

CHESAPEAKE REAL ESTATE GROUP, LLC

(410) 787. 8799 • WWW.CREGLLC.COM

1344 ASHTON ROAD • SUITE 105 • HANOVER • MARYLAND • 21076

