

TOWN CENTER AT ARUNDEL PRESERVE

7791 ARUNDEL MILLS BLVD
HANOVER, MD

STREET LEVEL RETAIL

LEED SILVER DESIGNED
MIXED-USE TOWN CENTER



Live

Work

Shop

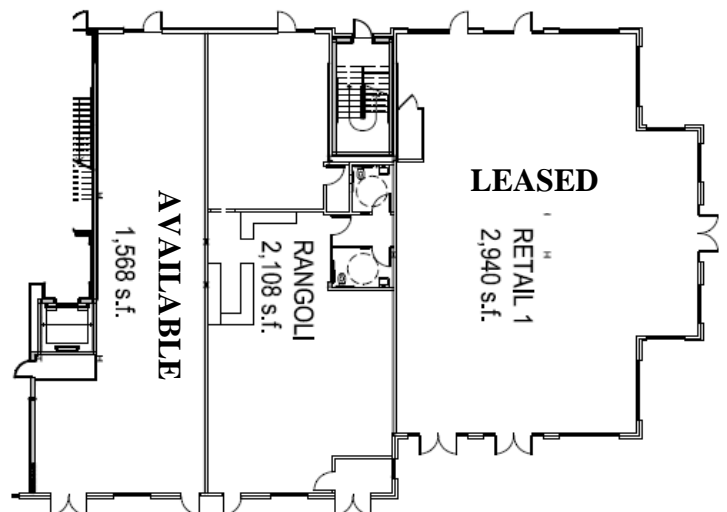
Play



The Town Center at ARUNDEL PRESERVE is a Smart-Growth project of urban character that will comprise approximately 1.3 million square feet of LEED Gold-designed, mixed-use development. The Town Center is one component of ARUNDEL PRESERVE, a 268 acre mixed-use community located at the center of the Baltimore-Washington Corridor with immediate access to I-295/BW Parkway and is a part of the larger 1,100 acre Arundel Mills development.

Street Level Retail Space in Town Center:

- ◇ 1,600 SF retail on Ground Floor of 242 unit luxury apartment building
- ◇ Outdoor seating adjacent to surrounding urban plaza
- ◇ Arundel Mills Blvd Signage
- ◇ 87,810 CPD at BW Parkway/Arundel Mills
- ◇ Over 1,500 residences within walking distance



FOR LEASING INFORMATION,
CONTACT:

JIM LIGHTHIZER
443-883-8171
JLIGHTHIZER@CREGLLC.COM

EDWARD BRADY
443-883-8170
EBRADY@CREGLLC.COM

ROB HOOPER
443-883-8179
RHOOPER@CREGLLC.COM



CHESAPEAKE REAL ESTATE GROUP, LLC

(410) 787. 8799 • WWW.CREGLLC.COM

1344 ASHTON ROAD • SUITE 105 • HANOVER • MARYLAND • 21076

