

# EASTGATE BUSINESS PARK

495 & PENNSYLVANIA AVE  
UPPER MARLBORO, MD

Permits in Hand  
Build to Suit For Sale



## PROPERTY FEATURES:

- Up to 120' truck court
- Ceiling 24' clear
- Interior office / showroom built-to-suit
- Dock and drive-in loading available
- 40 x 40 columns
- ESFR sprinkler systems

## CONTACT INFORMATION:



Jim Lighthizer  
443-883-8171  
Ed Brady  
443-883-8170

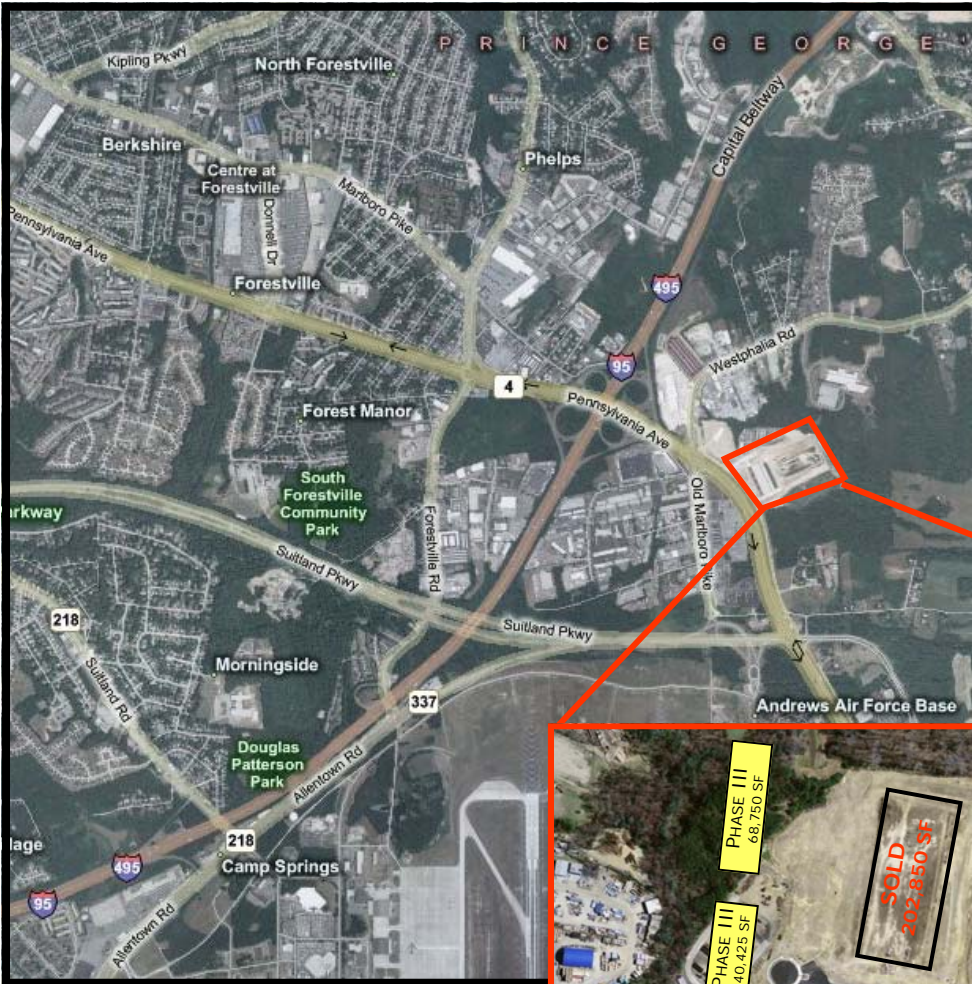


202. 783. 8200  
Ralph Haught  
Jay O'Donnell

© 2007 Chesapeake Real Estate Group, LLC. The information above has been obtained from sources believed reliable. While we do not doubt its accuracy, we have not verified it and make no guarantee, warranty or representation about it. It is your responsibility to independently confirm its accuracy and completeness. Any projections, opinions, assumptions or estimates used are for example only and do not represent the current or future performance of the property. The value of this transaction to you depends on tax and other factors which should be evaluated by your tax, financial and legal advisors. You and your advisors should conduct a careful, independent investigation of the property to determine to your satisfaction the suitability of the property for your needs. Chesapeake Real Estate Group, LLC.

**EASTGATE BUSINESS PARK**  
**495 & PENNSYLVANIA AVE**  
**UPPER MARLBORO, MD**

**Permits in Hand**  
**Build to Suit For Sale**



**LOCATION HIGHLIGHTS:**

- Adjacent to Interstate 495 & 95 offering immediate access
- Highly visible from Pennsylvania Avenue
- 1/2 mile to the Beltway



**CONTACT INFORMATION:**



**Jim Lighthizer**  
**443-883-8171**  
**Ed Brady**  
**443-883-8170**



**202. 783. 8200**  
**Ralph Haught**  
**Jay O'Donnell**

**DISTANCE FROM PROPERTY:**

- 10 minutes to Washington, DC
- 15 minutes to Northern Virginia
- 30 minutes to BWI Airport
- 20 minutes to DCA Airport

© 2007 Chesapeake Real Estate Group, LLC. The information above has been obtained from sources believed reliable. While we do not doubt its accuracy, we have not verified it and make no guarantee, warranty or representation about it. It is your responsibility to independently confirm its accuracy and completeness. Any projections, opinions, assumptions or estimates used are for example only and do not represent the current or future performance of the property. The value of this transaction to you depends on tax and other factors which should be evaluated by your tax, financial and legal advisors. You and your advisors should conduct a careful, independent investigation of the property to determine to your satisfaction the suitability of the property for your needs. Chesapeake Real Estate Group, LLC.