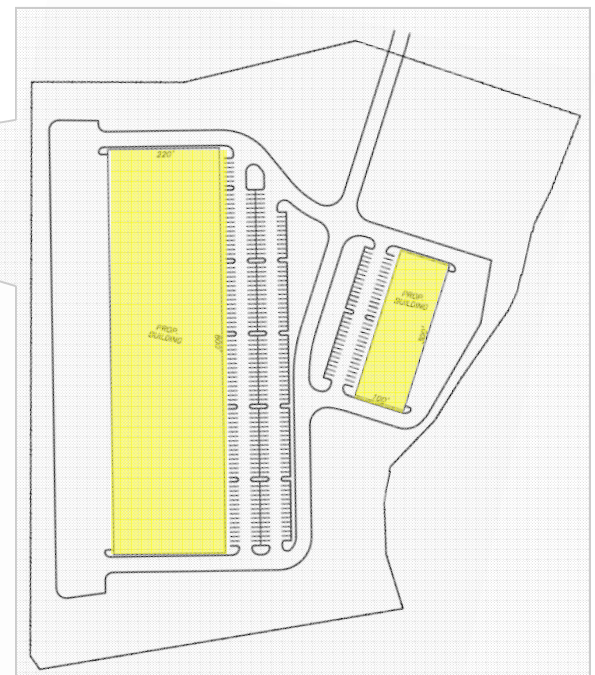
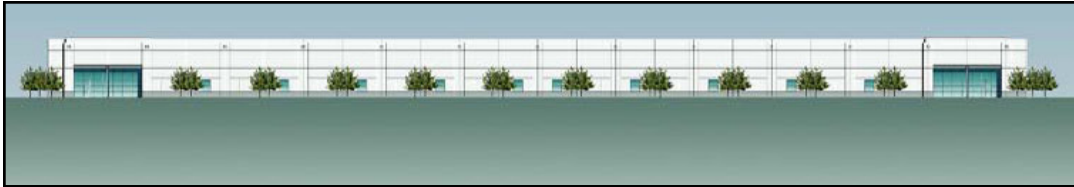


# BELLE GROVE BUSINESS PARK THOMAS AVENUE ANNE ARUNDEL COUNTY, MD

## FOR SALE / LEASE

22 Acre Business Park– Site Permits in Hand  
200,000 SF Office / Warehouse / Industrial



- DELIVERY TBD
- CONCRETE TILTWALL CONSTRUCTION
- 24' CLEAR
- OUTSIDE STORAGE
- DOCKS & DRIVE-INS
- BUILD-TO-SUIT OPPORTUNITY
- 176,000 SF OFFICE/WAREHOUSE (PROPOSED)
  - PARKING UP TO 296 CARS
  - BUILDING DIMENSIONS (220' x 800')
- 30,000 SF OFFICE/WAREHOUSE (PROPOSED)
  - PARKING UP TO 58 CARS
  - BUILDING DIMENSIONS (100' x 300')

### Contact Information:



**Jim Lighthizer**  
443.883.8171  
jlighthizer@cregllc.com

**Ed Brady**  
443.883.8170  
ebrady@cregllc.com

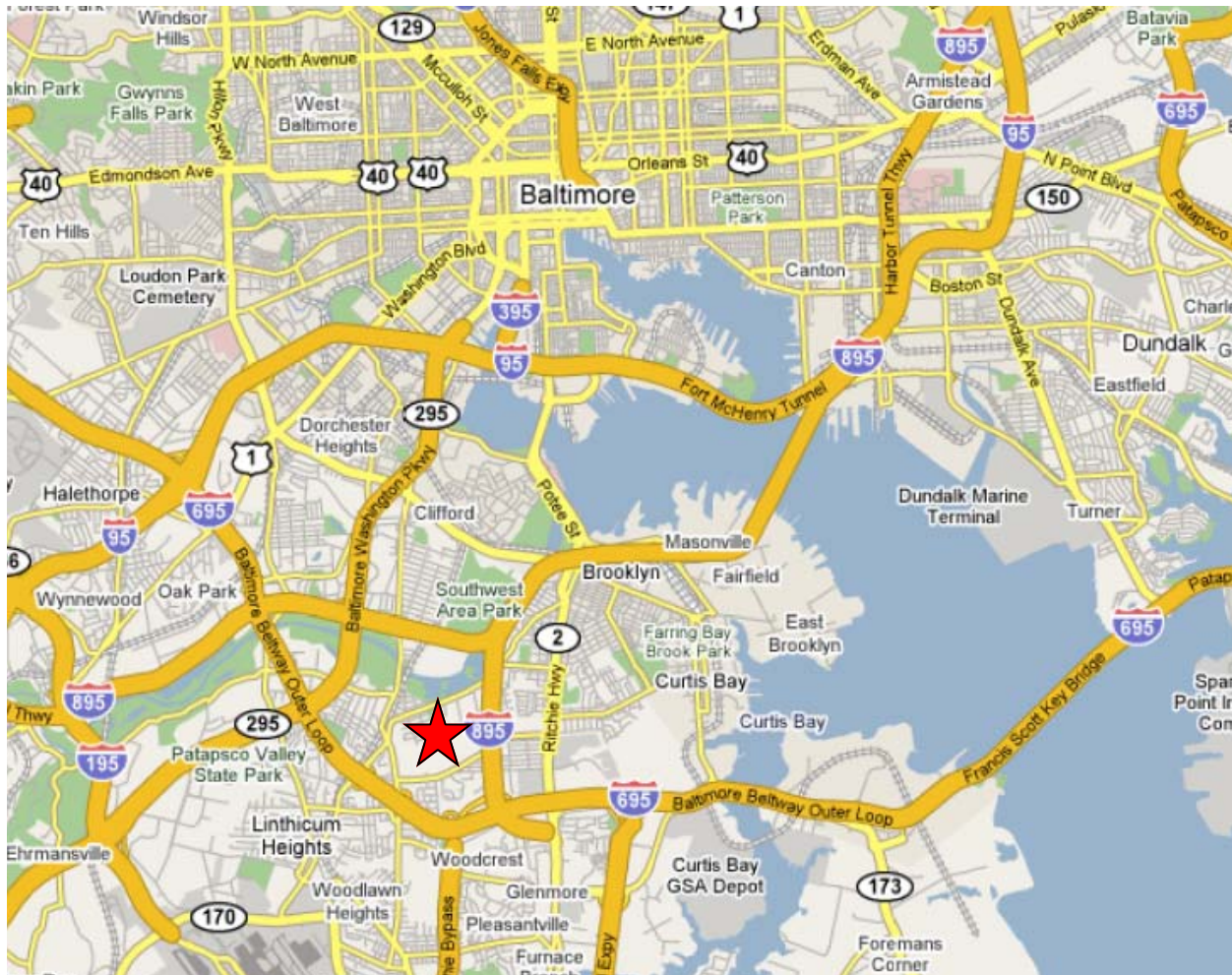
**Rob Hooper**  
443.883.8179  
rhooper@cregllc.com

Chesapeake Real Estate Group, LLC  
(410) 787. 8799 • www.cregllc.com

1344 Ashton Road • Suite 105 • Hanover • Maryland • 21076

**BELLE GROVE BUSINESS PARK**  
**THOMAS AVENUE**  
ANNE ARUNDEL COUNTY, MD

**FOR SALE**  
**/ LEASE**



- IMMEDIATE ACCESS OFF I-695, EXIT 5 & 6
- 5 MILES FROM BWI AIRPORT
- 10 MILES TO THE PORT OF BALTIMORE
- 5 MILES TO I-95



CHESAPEAKE  
Real Estate Group, LLC

**Contact Information:**

**Jim Lighthizer**  
443.883.8171  
jlighthizer@cregllc.com

**Ed Brady**  
443.883.8170  
ebrady@cregllc.com

**Rob Hooper**  
443.883.8179  
rhooper@cregllc.com

Chesapeake Real Estate Group, LLC  
(410) 787. 8799 • www.cregllc.com  
1344 Ashton Road • Suite 105 • Hanover • Maryland • 21076