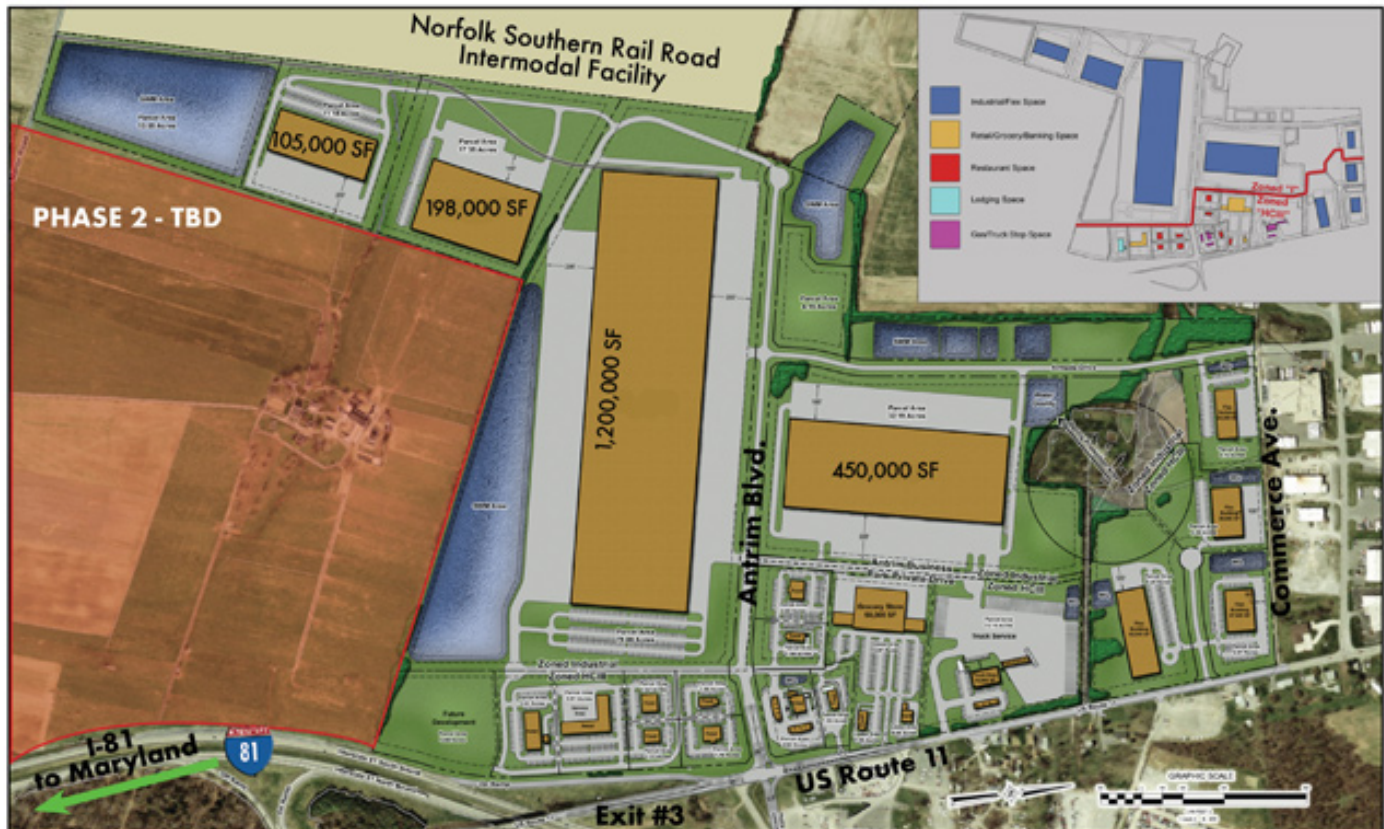


Norfolk Southern Intermodal & Antrim Commons Business Park

12875 Molly Pitcher Highway :: Greencastle, PA

For Lease / Sale
Available Immediately
Class "A" Office/Warehouse

I-81 DIRECT EXIT RAMP ACCESS AND ROUTE 11 VISIBILITY



- Adjacent to Greencastle-Antrim Township Industrial Park anchored by Food Lion's 2 million SF warehouse and World Kitchen's 1.2 million SF warehouse
- 1,800 SF of Rte. 11 and I-81 frontage

Contact Information:

Jim Lighthizer, CCIM, SIOR
443.883.8171
jlighthizer@cregllc.com

Ed Brady
443.883.8170
ebrady@cregllc.com

Rob Hooper
443.883.8179
rhooper@cregllc.com

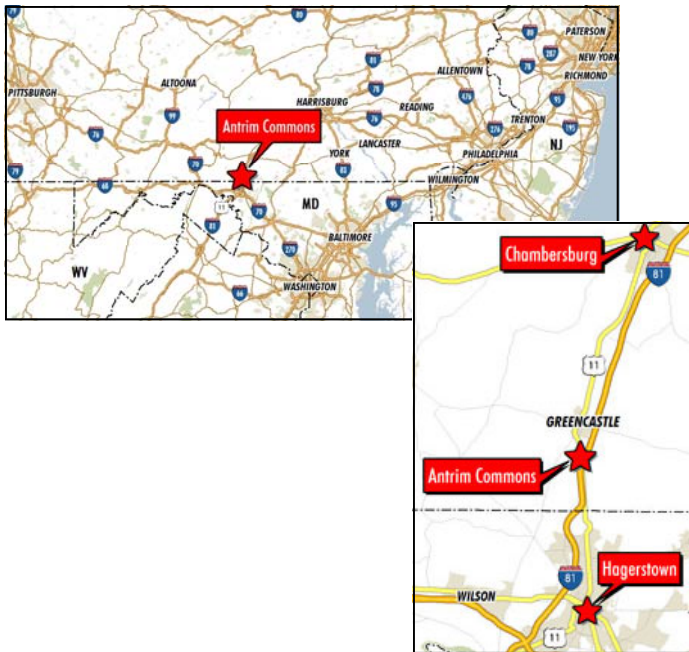
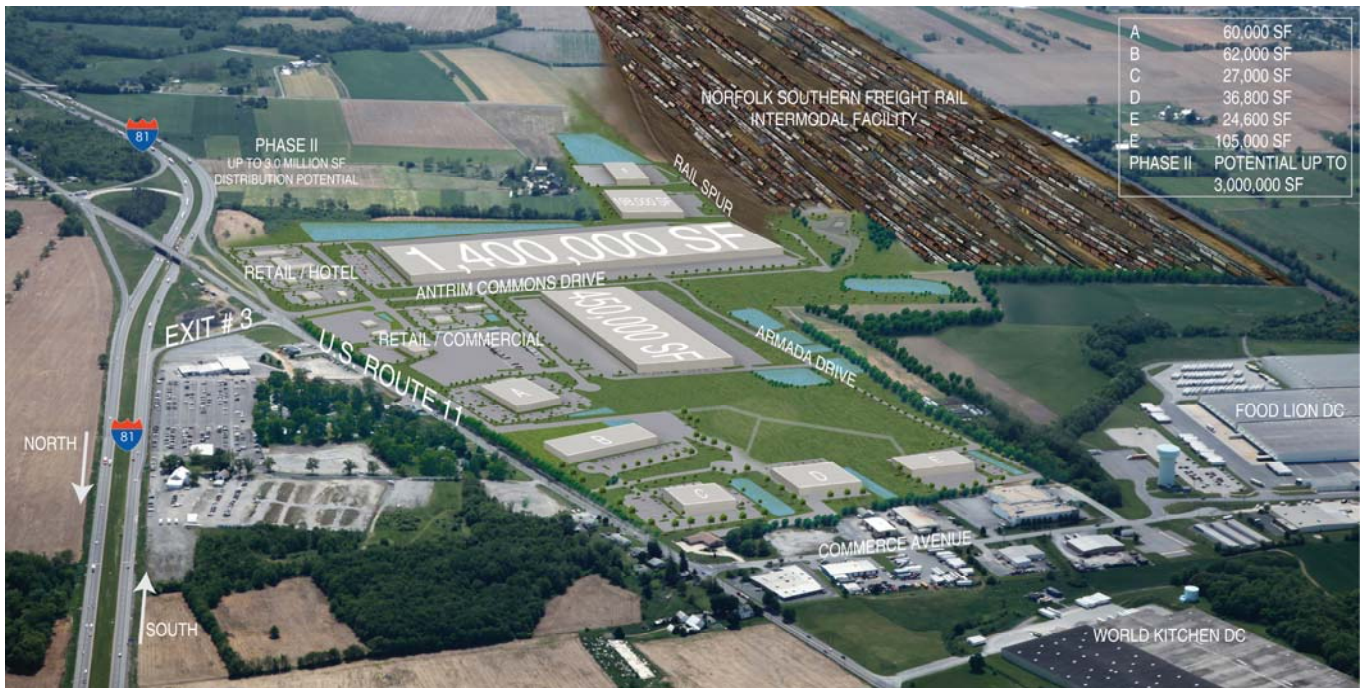


Chesapeake Real Estate Group, LLC
1344 Ashton Road • Suite 105 • Hanover • Maryland • 21076

Norfolk Southern Intermodal & Antrim Commons Business Park

12875 Molly Pitcher Highway :: Greencastle, PA

For Lease / Sale
Available Immediately
Class "A" Office/Warehouse



Features:

- On site 200 acre Norfolk Southern Intermodal
- +/- 500 acre site
- Over 6 million SF planned
- Zoned Industrial and Highway Commercial (HCIII)
- Rail served by Norfolk Southern
- On-site industrial grade electric, gas, municipal water, and sewer

Contact Information:

Jim Lighthizer, CCIM, SIOR
 443.883.8171
 jlighthizer@cregllc.com

Ed Brady
 443.883.8170
 ebrady@cregllc.com



Rob Hooper
 443.883.8179
 rhooper@cregllc.com