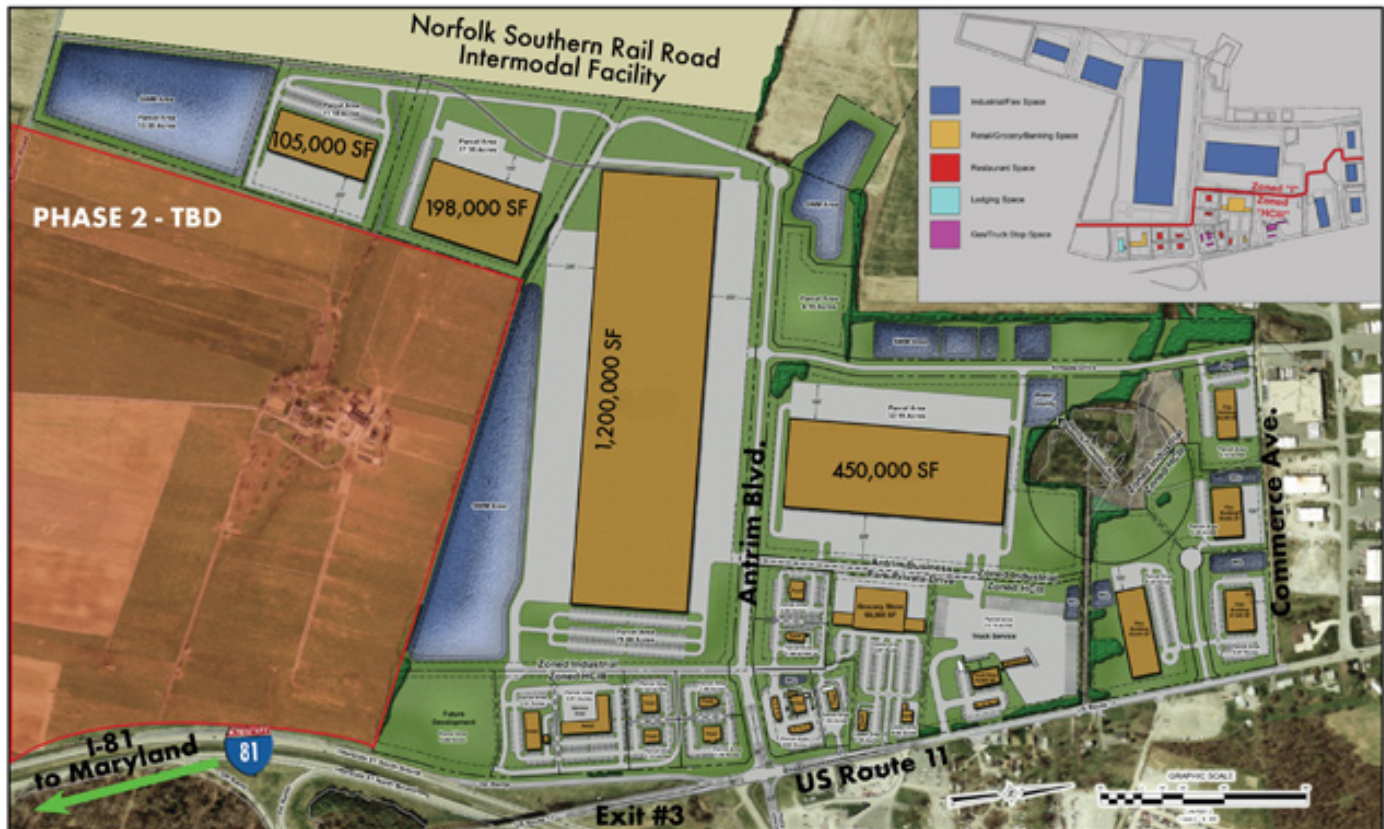


# Norfolk Southern Intermodal & Antrim Commons Business Park

12875 Molly Pitcher Highway :: Greencastle, PA

**For Lease / Sale**  
**Available Immediately**  
**Class "A" Office/Warehouse**

## I-81 DIRECT EXIT RAMP ACCESS AND ROUTE 11 VISIBILITY



- Adjacent to Greencastle-Antrim Township Industrial Park anchored by Food Lion's 2 million SF warehouse and Corningware Glass 1.2 million SF warehouse
- 1,800 SF of Rte. 11 and I-81 frontage

### Contact Information:

Jim Lighthizer, CCIM, SIOR  
443.883.8171  
jlighthizer@cregllc.com

Ed Brady  
443.883.8170  
ebrady@cregllc.com

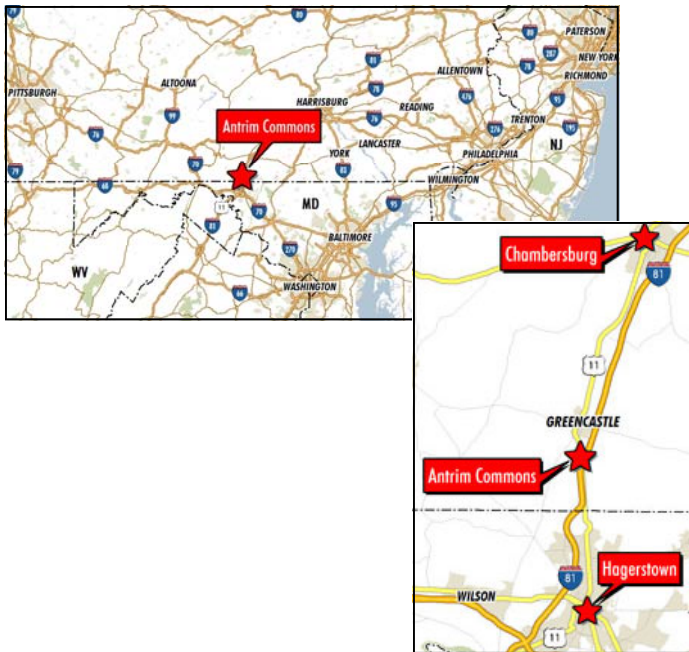
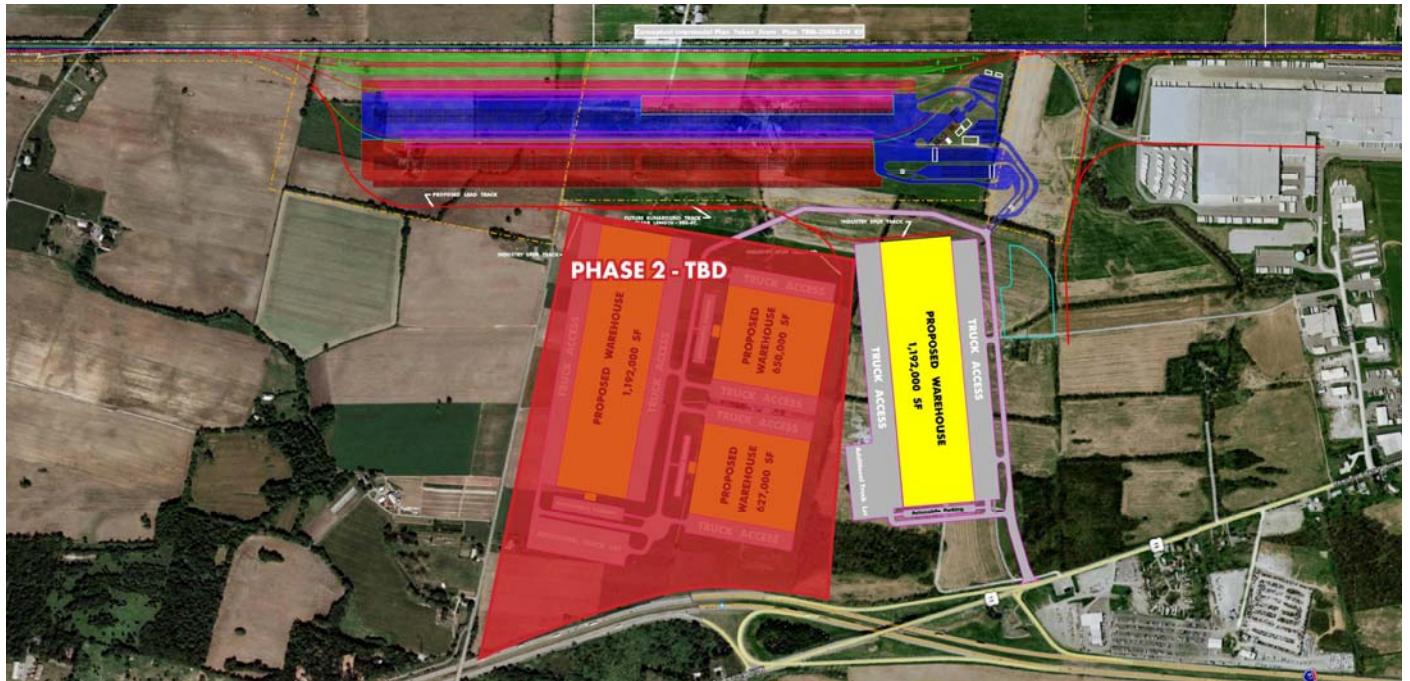


Chesapeake Real Estate Group, LLC  
1344 Ashton Road • Suite 105 • Hanover • Maryland • 21076

# Norfolk Southern Intermodal & Antrim Commons Business Park

12875 Molly Pitcher Highway :: Greencastle, PA

**For Lease / Sale**  
**Available Immediately**  
**Class "A" Office/Warehouse**



## Features:

- On site 200 acre Norfolk Southern Intermodal
- +/- 500 acre site
- Over 6 million SF planned
- Zoned Industrial and Highway Commercial (HCIII)
- Rail served by Norfolk Southern
- On-site industrial grade electric, gas, municipal water, and sewer

## Contact Information:

Jim Lighthizer, CCIM, SIOR  
443.883.8171  
jlighthizer@cregllc.com

Ed Brady  
443.883.8170  
ebrady@cregllc.com



Chesapeake Real Estate Group, LLC  
1344 Ashton Road • Suite 105 • Hanover • Maryland • 21076