

OFFICE/MEDICAL SPACE

7674 QUARTERFIELD RD
GLEN BURNIE, MD

FOR LEASE OR SALE



Building Information:

Space Available: 1,000-30,000 SF
Parking Ratio: 5.1 per 1,000 SF
Construction: Brick on Block



Property Information:

- ◇ High Visibility on Route 100
- ◇ Within "Medical Mile" of Baltimore Washington Medical Center
- ◇ Convenient access to Route 100/I-97
- ◇ Nearby amenities
- ◇ Ownership opportunity
- ◇ Lease Rate- \$22.50 + utilities
- ◇ Sale- \$230 PSF

FOR LEASING INFORMATION,
CONTACT:

JIM LIGHTHIZER
443-883-8171
JLIGHIZER@CREGLLC.COM

EDWARD BRADY
443-883-8170
EBRADY@CREGLLC.COM

ROB HOOPER
443-883-8179
RHOOPER@CREGLLC.COM



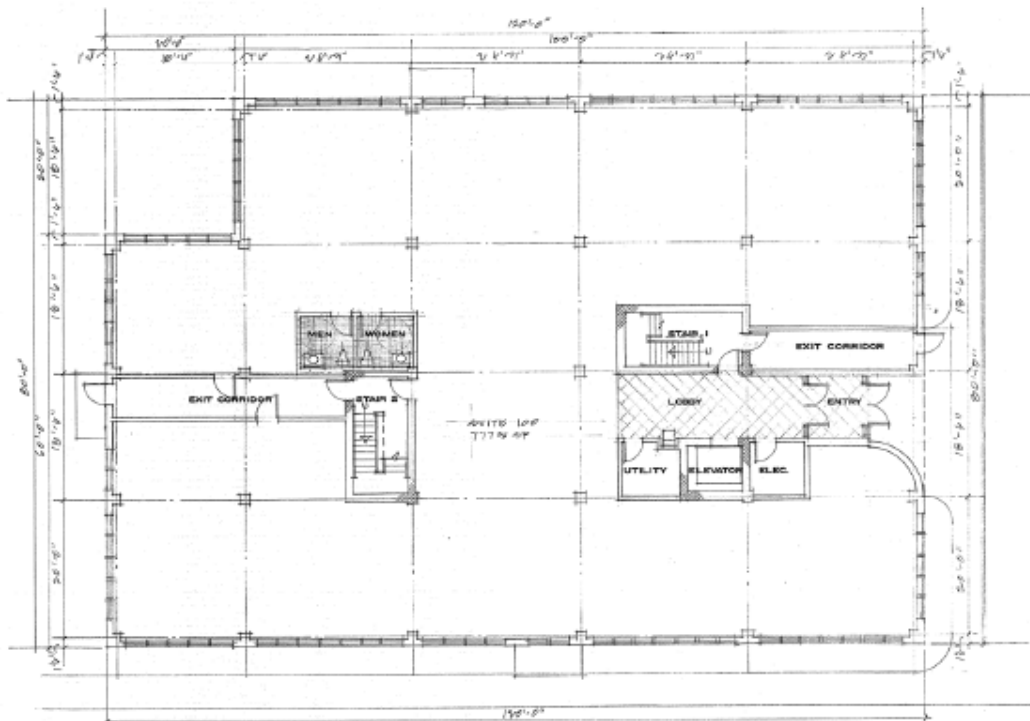
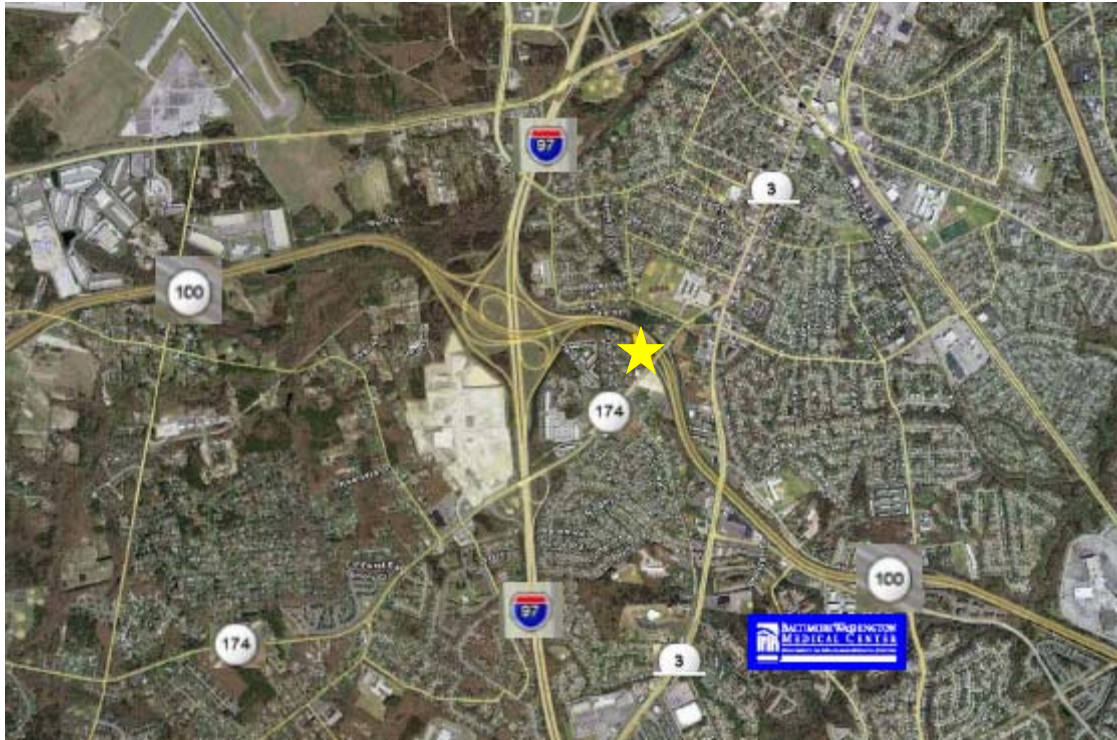
CHESAPEAKE REAL ESTATE GROUP, LLC
(410) 787. 8799 • WWW.CREGLLC.COM

1344 ASHTON ROAD • SUITE 105 • HANOVER • MARYLAND • 21076

OFFICE/MEDICAL SPACE

7674 QUARTERFIED RD
GLEN BURNIE, MD

FOR LEASE OR SALE



FOR INFORMATION CONTACT:

JIM LIGHTHIZER
443.883.8171

ED BRADY
443.883.8170

ROB HOOPER
443-883-8179



CHESAPEAKE
Real Estate Group, LLC

Although all information furnished regarding property for sale, rental or financing is from sources deemed reliable, such information has not been verified, and no express representation is made nor is any to be implied as to the accuracy thereof, and it is submitted subject to errors, omissions, change of price, rental or other conditions, prior sale, lease or financing, or withdrawal without notice.

1344 ASHTON ROAD, SUITE 105 • HANOVER, MARYLAND 21076 • WWW.CREGLLC.COM